

Elevator Rail Bracket

Deep Pit Access Safety



GEMTORTM

...when your life is on the lineTM

One Johnson Avenue
Matawan, NJ 07747
Phone: 800-405-9048
Fax: 732-290-9391
Email: sales.info@gemtor.com
www.gemtor.com

Elevator Rail Bracket

Gemtor's **Elevator Rail Bracket** allows for improved worker safety when working in Deep Pit Elevator Shafts. Designed for quick and easy mounting to the vertical rail that the elevator car rides on utilizing bolts and rail clips commonly used in the elevator industry. The bracket is designed for permanent installation and is powder coated in a high visibility yellow for easy identification inside dark elevator shafts.

It allows a retractable lifeline to be permanently installed so that a worker can connect their harness for a transition into and out of "Deep Pit" areas. It is designed for installation on either the left or right side of the elevator rail to accommodate the access ladder.

To install the **Elevator Rail Bracket**, minimal time and equipment is required.

$\frac{1}{16}$ " Wrenches (Box or Open End)

$\frac{1}{16}$ " Socket $\frac{1}{2}$ " Drive

$\frac{1}{2}$ " Drive Ratchet Wrench

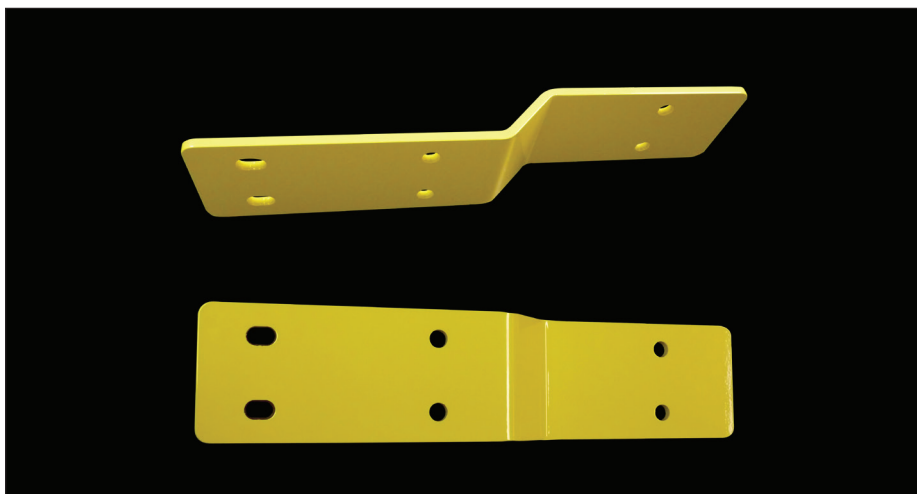
Torque Wrench (foot pounds).

The **Elevator Rail Bracket** is supplied with the bolts, nuts and washers required for installation. Four (4) rail clips are also required but are supplied by the elevator contractor in accordance with the type of rail installed. All components are Made in the USA.

Features

- ✓ Compatible with # $\frac{1}{2}$, # $\frac{3}{4}$ or #1 elevator rails.
- ✓ Reversible for installation on the left or right side of the rail.
- ✓ Fabricated from $\frac{3}{8}$ " steel and powder coated safety yellow.
- ✓ 5,000 pound anchorage point.
- ✓ Easy to attach to steel elevator rail by one person.
- ✓ Adjustable for different rail widths.
- ✓ No welding required.
- ✓ Compact and lightweight (weighs 11 $\frac{3}{4}$ pounds without hardware).
- ✓ Accommodates SRL Series Self Retracting Lifelines in lengths of 30, 50 and 65 feet. Specific model required for rigid mounting. Others may be attached using carabiner.
- ✓ Reusable*.

* Device shall be inspected before and after each use by a qualified person. In the event of a fall, all associated devices (harness, lanyard, etc.) must be inspected.



Available Systems

ERB-1-34 – Bracket only

ERB-1-34-30 – Bracket w/SRL-30' Retractable

ERB-1-34-50 – Bracket w/SRL-50' Retractable

ERB-1-34-65 – Bracket w/SRL-65' Retractable

Other Configurations Available

Complementary Components

CHA – Concrete Hole Anchor designed for use in concrete floor decks utilizing a $\frac{3}{4}$ " hole.

SHA – Steel Hole Anchor designed for use in structural steel with a hole ranging from $\frac{3}{4}$ " to $\frac{7}{8}$ ".

SRL Series – Self Retracting Lifelines available in 30 foot, 50 foot and 65 foot lengths. Available with galvanized or stainless steel cable. Weighs from 16 to 27 pounds.

SL2 Series – Self Retracting Lifelines with lightweight aluminum housing. Choose from 30, 50 or 100 foot lengths. Available with galvanized or stainless steel cable. Weighs from 20 to 45 pounds.

SWL Series – Self Retracting Lifelines with steel housing available in 20 foot and 30 foot lengths. Weighs 12 (20') or 14 $\frac{1}{2}$ (30') pounds.

FLW Series – Self Retracting Lanyard supplied with 10 feet of polyester or Technora webbing. Weighs 2 $\frac{3}{4}$ pounds.

RL8 – Self Retracting Lanyard with 8 feet of 1 $\frac{1}{4}$ " wide polyester webbing. Weighs 2 $\frac{3}{4}$ pounds.

Carabiners – A wide variety of carabiners are available for use as connectors.

Snap Hooks – A full array of snap hooks in many configurations are available.

Harnesses – Gemtor produces full line of harnesses to meet your specific needs.

Usage & Inspection

During the regularly scheduled inspection of an elevator with a Deep Pit Retractable Lifeline installed the torque values of the bolts shall be verified and the functionality of the SRL Lifeline shall be checked. In addition, the functionality of the SRL Lifeline shall be checked prior to each use.

Your Authorized Gemtor Distributor:

GEMTOR[™]



... when your life is on the line[™]

Gemtor, Inc. • 1 Johnson Avenue • Matawan, NJ 07747

Phone: 800-405-9048 • Fax: 732-290-9391

www.gemtor.com | sales.info@gemtor.com

ERB_07-2014