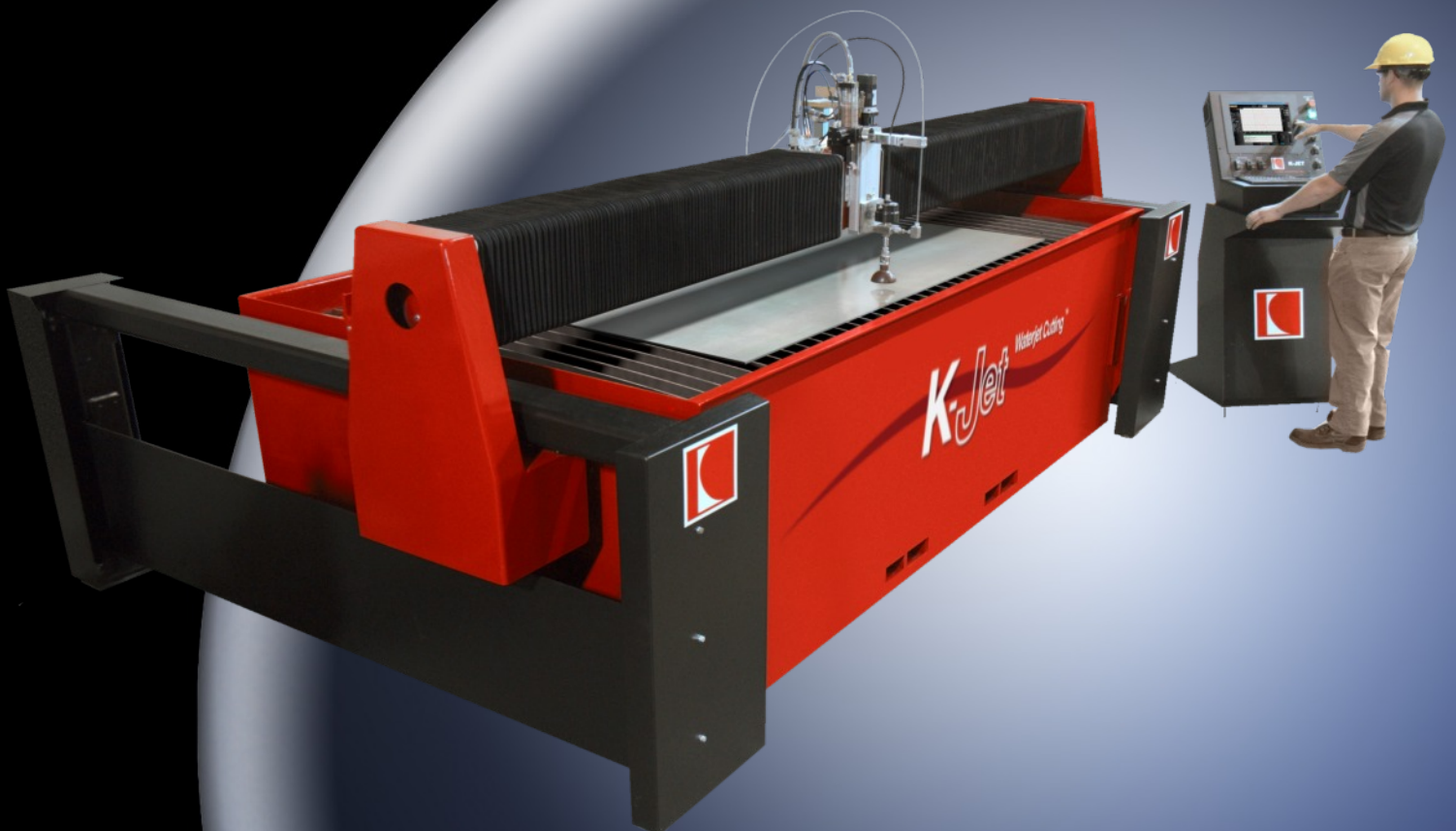


CUTTING, POSITIONING & WELDING EQUIPMENT

K-JET

WATERJET CUTTING EQUIPMENT



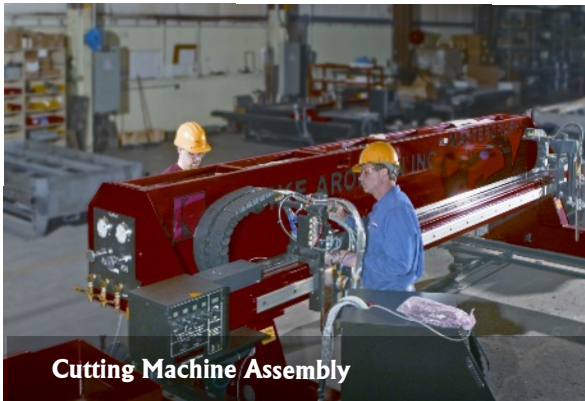
Koike Aronson, Inc./Ransome

Headquarters- Arcade, NY

COMPANY

Koike Aronson, Inc./Ransome is headquartered in Arcade, NY. We are a proud supplier of advanced cutting machines, welding positioning equipment,

portable cutting/welding machines, and gas apparatus. Our knowledgeable staff can assist you with virtually all your needs in metal fabrication. Koike Aronson/Ransome cutting machines can be customized to fit most requirements, and our welding and positioning equipment can be made to accept work pieces of nearly any size.



Cutting Machine Assembly

Our manufacturing area consists of a machine shop, saw shop, two assembly shops, a burn shop, and a weld shop. Handling nearly all manufacturing in-house helps us maintain our extremely high quality. Our factory uses 5S, a lean tool directive, that increases productivity through tidiness and improved organizational practices. We have the capacity to run three shifts with approximately 100 employees per shift. Machining capabilities range anywhere from a small nut to a large weldment. Most importantly, we use our own products to build our customers' machines.

The Engineering Department is comprised of mechanical, electrical, and software engineers with over 250 combined years of design, process, and technical experience. Their knowledge allows us to apply proven designs to customer needs and to develop new technology for custom applications. AutoCAD, SolidWorks, and Cosmos software are used to optimize designs for standard products and to create custom solutions for specialized equipment. Our electrical and mechanical systems are designed to industrial standards for strength, reliability, and safety.



World Class Service Support

We have the technicians, training, and engineering support to keep your machine running like new for years to come.

The Business Unit and Customer Service Representatives of Koike Aronson/Ransome offer our customers well over 170 years of combined experience. They work with our many distributors and manufacturer sales representatives to make sure you get quality products and the right equipment for your application. We encourage feedback, and are ready to work with you to keep your machine productive for many years.

The dedicated service technicians of our Field Service Department work as a team to keep machines running at top performance. This starts with sending pre-installation documentation to prepare our customers for machine delivery, installation, and training. Our website is filled with helpful information including the KAR Club, which offers numerous tips on troubleshooting, tuning your machine, and machine maintenance.



For Other Downloads, please scan here with your smartphone

Made in USA. At Work Worldwide

Koike Customer Visit Program See How Koike Can Make Metal More Profitable For You

Koike Aronson's Customer Visit Program was introduced to provide those looking to purchase equipment the opportunity to come visit us, meet our people, and tour our complete manufacturing facility.

Your visit to our facility is on us. All expenses paid for including: airfare, transportation, room and meals.

Call a Koike Representative for details
and schedule your appointment today!

Phone: (585) 492-2400

Toll Free: (800) 252-5232

Fax: (585) 457-3517



MANUFACTURING PROCESSES



LOGISTICS



SAWING / MACHINING



BURNING



ASSEMBLING



PAINTING



WELDING/FABRICATING

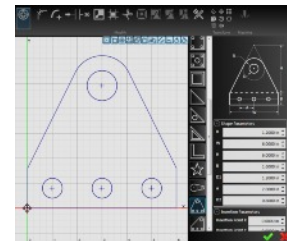
K-JET



The new Koike Aronson K-Jet waterjet cutting system features: KMT intensifier pumps, Flash-Cut CNC with built in CAD/CAM software and EBBCO filtration systems. Fully enclosed air pressurized bellows, hidden linear ways and conveniently located grease fittings will help keep this machine running for extended periods of time.

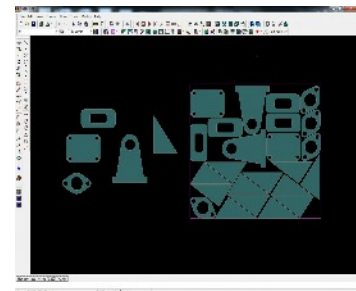
With standard cutting areas up to 72" X 144", table capacity up to 250 lbs. per square foot (6" mild steel), initial height control with magnetic cutting nozzle breakaway and cut speeds up to 500 ipm makes the K-Jet a must for any shop. The heavy duty cutting table is mounted separately to the floor and not attached to the rails. This helps with any deflection from heat buildup or vibration from the cutting process. Easily removable slats and slat supports allows for easy maintenance. The heavy duty precision machined main beam and saddles help with smooth and accurate motion throughout the entire table.

SOFTWARE



Flash Cut

- 2-Seats of Software
- Auto-nesting
- True CAD/CAM



Hypertherm® CAM Solutions or IGEMS

- Auto-nesting
- Interactive Manual Nesting
- Costing, Reporting, & System Interface

CNC CONTROLS



Flashcut Titanium Series CNC Control

- 400 Watt AC Servo Motors
- 15 inch touch screen
- Nema 4 Waterproof Keyboard
- Integrated E-Stop
- Real time visualization of torch path
- Windows 7 Pro
- 5th generation Intel I3 Microprocessor or better
- 8GB RAM or better
- 120 GB SSD or better
- 2 USB Ports
- Standard editable shape library
- On-board Completely integrated Flash Cut 2D CAD/CAM package
- DXF import/Silhouette import
- On-board automatic nesting software
- On-board Lead in and lead out type, positing and length adjustment
- Remote diagnostics
- One seat of Flashcut Titanium Software for remote PC installation

PUMP OPTIONS



KMT Triline Direct Drive Pump, 55,000 psi (30hp)



KMT Streamline Pro III 90,000 psi (60 & 125hp)



KMT Streamline SL-VI 50 60,000 psi (50hp)

EBBCO FILTRATION SYSTEM OPTIONS



Ebbco systems provide the full range of filtration products for any application. From their Abrasive Removal System to the Closed Loop Filtration System, Ebbco offers solutions for abrasive disposal, water purification, water re-use and waste water filtration.



The Abrasive Removal System is designed to continuously remove spent abrasive that collects in the water tank. This system eliminates downtime for clean out and provides a clean and easy method to handle the abrasive and maximizes production.



The Closed Loop Filtration System filters the overflow water from the waterjet table. This system drastically reduces water consumption, which saves utility costs and prevents the discharge of dissolved solids. This system provides sufficient water volume while eliminating the requirement for water treatment such as softeners, reverse osmosis and de-ionizing water systems.

FEATURES & OPTIONS

Abrasive Hopper (100 lbs., 500 lbs., 800 lbs., 2,000 lbs.)	Standard 500 lbs
Abrasive Removal	Option
Automatic Pierce Height	Standard
Flashcut Titanium CNC	Standard
Air Over Oil Cooler	Option
Closed Loop Filtration	Option
CAD/CAM Software	Standard
Nesting Software	Standard
Artistic Software	Standard
Intensifier Pump (60Kpsi)	50hp Standard

Laser Pointer	Option
Parts Catcher	Option
Pump Consumable Kit	Standard
Pump Tool Kit	Standard
Stainless Steel Slats	Option
Table Side Shields	Option
Water Height Control	Option
Wireless Networking	Standard
Clamping	Option

SPECIFICATION

Size	44	48	510	610	612
Linear Accuracy	+/- .003 in .076 mm	+/- .003 in .076 mm	+/- .003 in .076 mm	+/- .003 in .076 mm	+/- .003 in .076 mm
Repeatability	+/- .001 in .025 mm	+/- .001 in .025 mm	+/- .001 in .025 mm	+/- .001 in .025 mm	+/- .001 in .025 mm
Rapid Traverse Speed	500 in/min 12,700 mm/min	500 in/min 12,700 mm/min	500 in/min 12,700 mm/min	500 in/min 12,700 mm/min	500 in/min 12,700 mm/min
Maximum Cut Speed	500 in/min 12,700 mm/min	500 in/min 12,700 mm/min	500 in/min 12,700 mm/min	500 in/min 12,700 mm/min	500 in/min 12,700 mm/min
Machine Travel Y/X/Z	52 / 52 / 6 in 1320/1320/150 mm	100 / 52 / 6 in 2540/1320/150 mm	122 / 62 / 6 in 3100/1575/150 mm	122 / 74 / 6 in 3098/1879/152 mm	148 / 74 / 6 in 3759/1879/152 mm
Machine Width/Length/Height (w/o whip)	90 / 90 / 72 in 2286/ 2286/1829 mm	138 / 90 / 72 in 3505/ 2286/ 1829 mm	160 / 100 / 72 in 4064/ 2540/ 1829 mm	160 / 112 / 72 in 4064/ 2845/ 1892 mm	184 / 112 / 72 in 4674/ 2845/ 1829 mm
Load Capacity	250 lb/sqft 1220 kg/sqm	250 lb/sqft 1220 kg/sqm	250 lb/sqft 1220 kg/sqm	250 lb/sqft 1220 kg/sqm	250 lb/sqft 1220 kg/sqm
Table Height	42 in 1067 mm	42 in 1067 mm	42 in 1067 mm	42 in 1067 mm	42 in 1067 mm

WORKSHEET

Effective Cutting Width: Effective Cutting Length:

Material Thickness Range

Material Types:

Minimum Thickness:

Maximum Thickness:

Pump Selection

- ☐ 30 hp ☐ 60 hp
☐ 50 hp (standard) ☐ 125 hp

Control

- ☐ Flashcut Titanium CNC

Software

- ☐ Flashcut PRO
☐ IGEMS

Power Requirements

Voltage:

Water & Waste Management Systems

- ☐ Closed Loop Water Filtration ☐ Air Over Oil Cooler
☐ Abrasive Removal

Abrasive Hopper Size

- ☐ 100 lbs. (45kg) ☐ 800 lbs. (362kg)
☐ 500 lbs. (226kg) ☐ 2,000 lbs. (907kg)



Scan to fill out
electronically

CUTTING, POSITIONING & WELDING EQUIPMENT



Koike Aronson, Inc./Ransome



635 W. Main Street
P.O. Box 307
Arcade, NY 14009

Phone: (585) 492-2400
Fax: (585) 457-3517
Toll Free: (800) 252-5232

www.koike.com

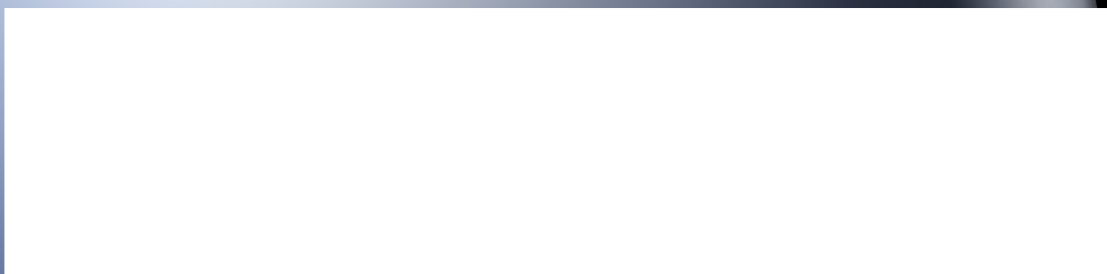


Koike Aronson Brasil

Estrada dos Romeiros, 6116
Galpão 97
Santana de Parnaíba - SP Brasil
CEP 06513-001

Tel/Fax: +55 [11] 4780-7341

www.koike.com/br



K-JET 08/18 KENG