

# Mepilex® Up

Non-Bordered foam that  
minimizes the risk of leakage

## Low profile polyurethane foam pad

- Manages high fluid volumes for a long period of time<sup>1</sup>
- Highly conformable

## Dimpled surface pattern

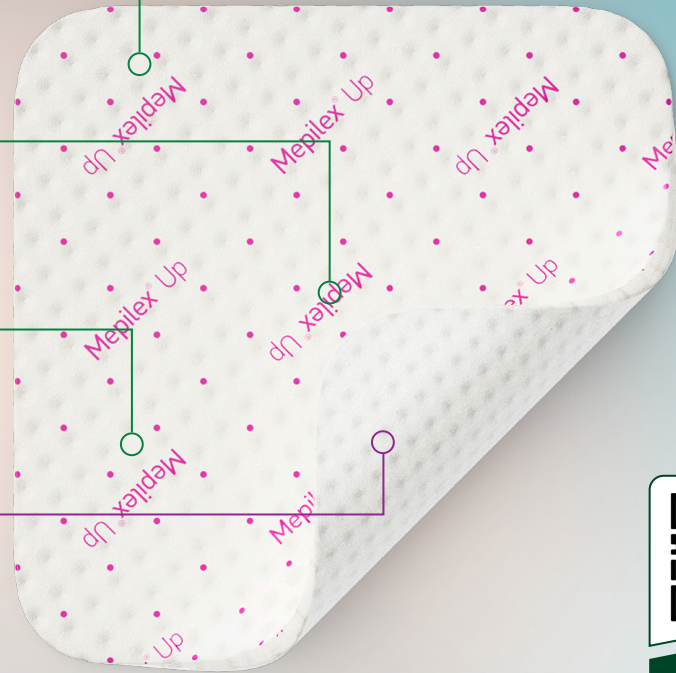
- Spreads exudate in all directions, even under compression and against forces of gravity<sup>1,2</sup>

## Polyurethane backing film

- Breathable and water resistant
- Secures fluid and evaporates excess moisture

## Safetac® layer

- Reduces pain during dressing changes<sup>3</sup>
- Adheres to dry skin but not to the wound bed
- Seals wound margins and reduces the risk of maceration<sup>4</sup>

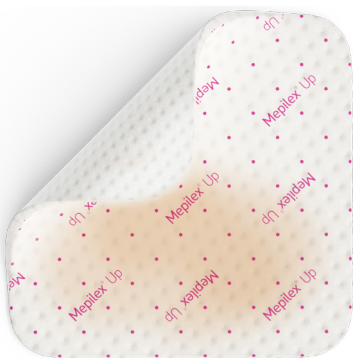


Scan here  
to learn more

## How Mepilex Up works

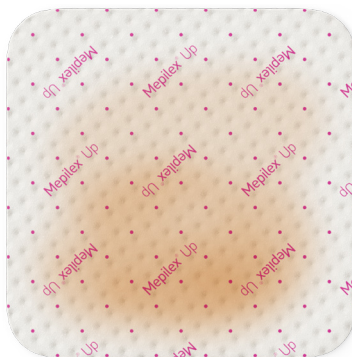
The soft silicone **Safetac® layer** seals the wound margins, channeling exudate vertically into the foam and helping prevent maceration.

Stage 1



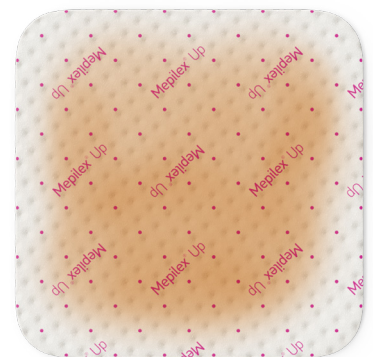
The patented foam structure creates a proprietary dimpled surface pattern.<sup>5</sup>

Stage 2



The dimpled pattern enables the dressing to spread fluids evenly in all directions, even against gravity.

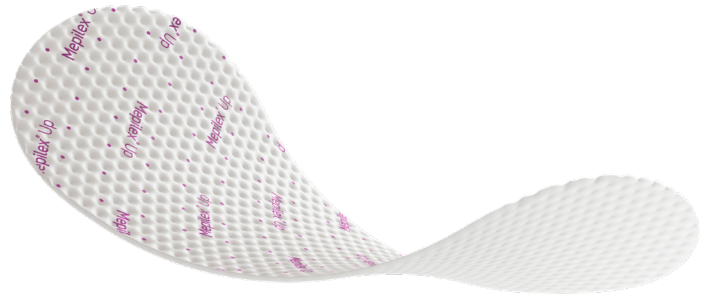
Stage 3



The innovative and unique spreading properties minimize the risk of leakage and may contribute to long wear time and fewer dressing changes<sup>6</sup>

## Benefits of Mepilex® Up

- Absorbs both low and high viscous exudate
- Higher fluid handling capacity than other foam dressings<sup>7</sup>
- Minimizes risk of leakage, even under compression<sup>1</sup>
- Long wear time and fewer dressing changes<sup>1</sup>
- Promotes patient comfort during wear<sup>8</sup>
- Trimmable and conformable to suit various wound shapes and difficult-to-dress areas<sup>9</sup>
- Minimizes pain and trauma at dressing changes
- Can remain in place during X-ray, CT and MRI<sup>10</sup>



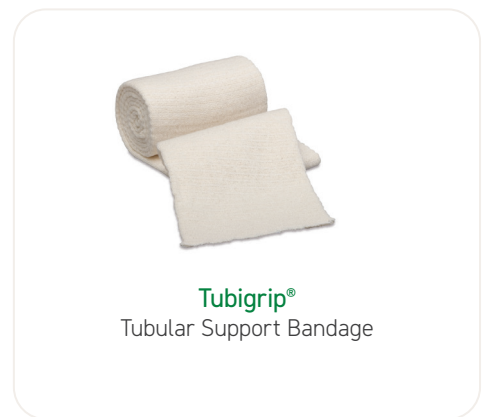
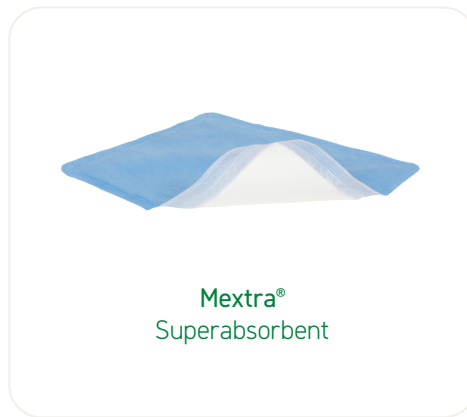
## Wear Time

Mepilex Up may be left in place for several days depending on the condition of the wound and surrounding skin or as indicated by accepted clinical practice.

## Indications for Use

Mepilex Up is intended for the management of a wide range of exuding wounds in all healing stages such as chronic wounds, e.g. leg ulcers, foot ulcers and pressure ulcers, and traumatic wounds, e.g. skin tears and secondary healing wounds.

## Mepilex® Up may be used with these Mölnlycke Wound Management products



## Mepilex® Up ordering information

Product Code	Size	Pcs/box	Pcs/case	HCPCS
212199	4" x 4" (10 x 10 cm)	10	40	A6209
212299	4" x 8" (10 x 20 cm)	10	30	A6210
212399	6" x 6" (15 x 15 cm)	10	30	A6210
212499	8" x 8" (20 x 20 cm)	10	30	A6211

**References:** 1. Mölnlycke Health Care. Test report PD-701547. Data on file. 2. Mölnlycke Health Care. Test report PD-701546. Data on file. 3. Gee Kee E.L. et al. Randomized controlled trial of three burns dressings for partial thickness burns in children. Burns, 2014. 4. Wiberg A.B. et al. Preventing maceration with a soft silicone dressing: in-vitro evaluations. Poster presented at the 3rd Congress of the WUWHS, Toronto, Canada, 2008. 5. Mölnlycke Health Care Data on file 2022. 6. Mölnlycke Health Care Data on file 2022. 7. Mölnlycke Health Care. Test Report PD-741994. Data on file 2024. 8. Weaver, G., Crawford, K. The use of Mepilex on Dehisced Amputation Wounds. Wounds UK 2007; 3(1). 9. Mölnlycke Health Care Data on file 2024. 10. Mölnlycke Health Care Data on file. 2024.

## Find out more at [www.molnlycke.us](http://www.molnlycke.us)

The Mölnlycke Health Care, Mepilex, Exufiber, Mextra, Tubigrip and Safetac trademarks, names and logo types are registered globally to one or more of the Mölnlycke Health Care Group of Companies. Distributed by Mölnlycke Health Care US, LLC, Peachtree Corners, Georgia 30092. © 2025 Mölnlycke Health Care AB. All rights reserved. 1-800-843-8497.  
USMM\_270758 04.25

MHC-2025-000060

