



COVER YOUR MUG

NOTEVERYBODY NEEDS AN N95, BUT EVERYBODY NEEDS SOMETHING.

Remember the stone ages when we all just went around spitting in each other's faces like a bunch of angry alpacas? That's so 2019BC (Before Covid).

Cover your mug and get with the times.

Learn more about our full line of Skullerz Face Coverings at ergo.zone/mug

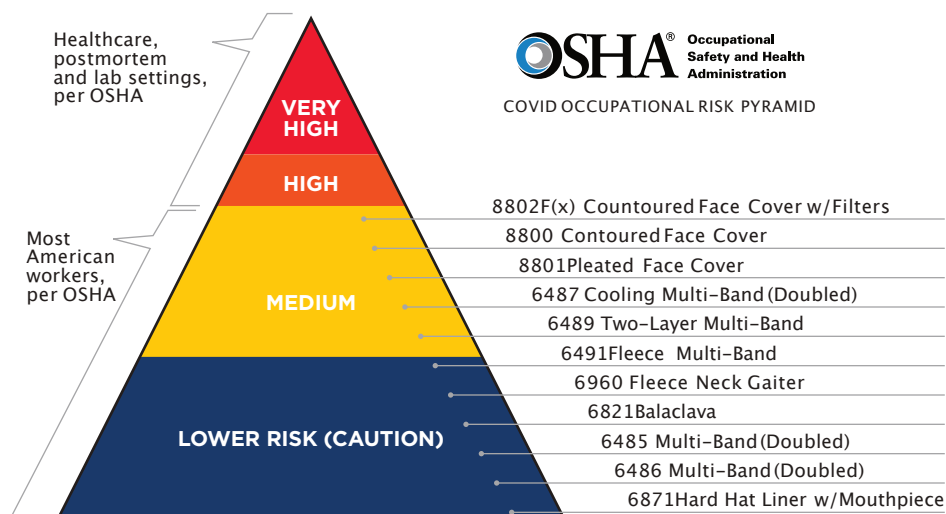
EYEWEAR + GASKETED EYEWEAR



FACE COVERINGS FOR WINTER



FACE COVERINGS FOR SUMMER



WHATFACE COVERING SHOULD I CHOOSE?

Select the most appropriate face covering based on your exposure risk, filtration level, breathability and comfort.

The majority of American workers operate within "Lower" to "Medium" risk levels as outlined by OSHA's Worker Exposure Risk Pyramid.

LOWER EXPOSURE RISK:

Minimal contact with public and other co-workers; outdoor work



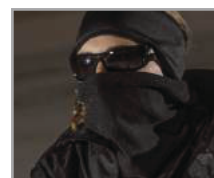
6871Hard Hat Liner w/Mouthpiece



6485 Multi-Band (Double Layer)



6821 Balaclava



6960 Fleece Neck Gaiter



6491Fleece Multi-Band

MEDIUM EXPOSURE RISK:

Frequent contact with public and coworkers; indoor/outdoor work



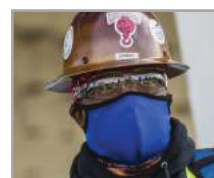
6487/6489 Multi-Band (Double Layer)



8801Pleated Face Cover



8800 Countoured Face Cover



8802F(x) Countoured Face Cover

